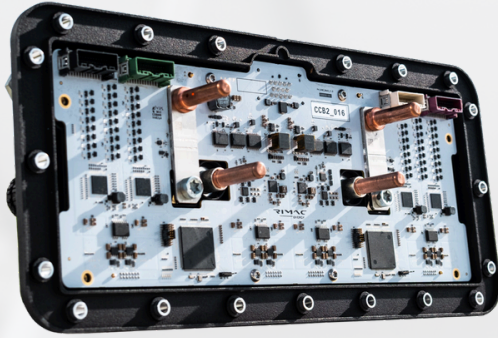


SINETECH OVERVIEW

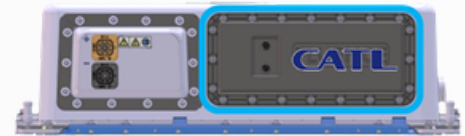
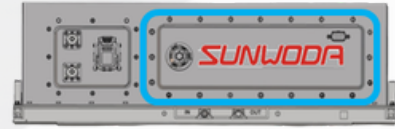
The Future of Power Conversion and Battery Management

SineTech integrates the power conversion system into the module BMS, eliminating the separate (string or central) inverter

- Replaces the conventional module BMS and includes all AC power conversion incl. direct ~400VAC LV grid connection
- Compatible with a wide range of off-the-shelf battery modules from various suppliers
- The distributed inverter architecture provides industry leading granularity of control and efficiency



SineTech fits most modules

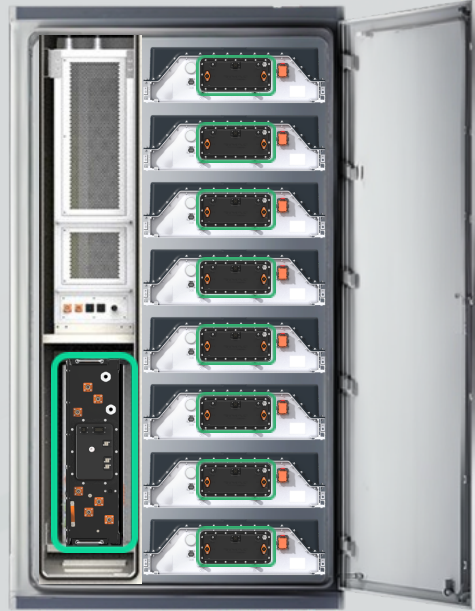


Sample C&I DC System



Replace BMS with SineTech

SineTech AC System



0 Footprint AC System

Full AC system with direct LV grid connection

+15% Energy Extraction

SoC + SoH based active balancing

Native Redundancy

Bypass faulty component to continue operations

>99% Efficiency

Leading efficiency at low, mid, and high load

+1500 Cycle Life

SoH tracking and management

Western BMS + PCS

Developed in Europe, produced in US & Europe

SINETECH DATA SHEET

The AC Cassette directly integrates the BMS & modular multi-level inverter into the battery module

- 2x Full-bridge inverters capable of supporting 2- or 4-hour BESS products
- In-built protections for current, voltage and temperature
- Enables independent battery pack power control and automated balancing
- Powered by our proprietary battery intelligence algorithms that maximize performance extraction

AC Cassette

Max. Continuous Power Output	33 kVA
Nominal AC Voltage	100 Vac
Max. Continuous AC Current	335 Arms
Nominal AC Current	265 Arms
Efficiency at Nominal Load	>99.0 %
Nominal DC Voltage	166 Vdc
Cell Temperature Sensors	Up to 28
Cooling	Liquid, 1,5L/min
IP Rating (mounted to module)	IP67



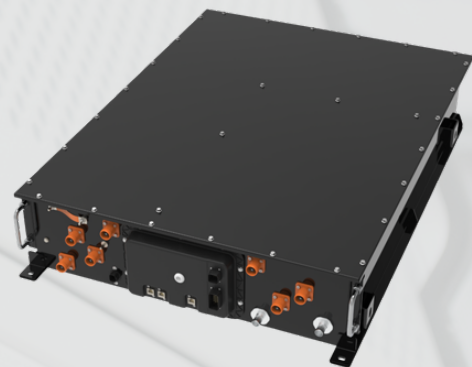
360mm x 172mm x 104mm

The SineTech Power Distribution Unit couples each AC battery rack to the grid

- The rack controller communicates with the site or energy management system
- The rack controller is responsible for central BMS and PCS controls, sending commands and receiving feedback from the AC Cassettes over RS-485 and CAN network
- Key components:
Rack controller, 3-Phase contactor, line fuses, L-L voltage measurement, phase current measurement, grid filter

Rack PDU

Max. Continuous Power Output	400 kVA
Nominal AC Voltage	400 / 480 / 690 Vac
Max. Continuous AC Current	335 Arms
Nominal AC Current	265 Arms
Efficiency at Nominal Load	99.8 %
Cooling	Liquid 1,5L/min
IP Rating	IP55



750mm x 235mm x 110mm



Croatia
Buzinski Krči 3
10010, Buzin
Zagreb

United Kingdom
Unit 1, Tungsten Park
Colletts Way Witney
Oxfordshire OX29 0AX

[General Enquiries](mailto:info@rimac-energy.com)
info@rimac-energy.com